

ACCOMMODATION AT THE ANNUAL CONFERENCE

ILGA-Europe aim at making the Annual Conference as accessible as possible. Organising the conference in Brussels comes with somewhat higher costs than in other countries. Therefore we have worked hard to identify different types of accommodation that can cater for different budgets. To this end we offer **two options** regarding accommodation:

- You can stay in one of the hotels pre-booked by ILGA-Europe
- You can arrange your own accommodation

1. STAY IN ONE OF THE HOTELS PRE-BOOKED BY ILGA-EUROPE

Brussels is a more costly destination than previous conference host cities. In order to secure enough rooms at competitive rates and in different price ranges, we have negotiated discount rates and pre-booked rooms in **4 different hotels** – the conference hotel and 3 other hotels within 10 minute walking distance.

Why stay in one of the hotels pre-booked by ILGA-Europe?

- You do not need to get in touch with the hotel – ILGA-Europe will centralise the booking process
- You get a room at a negotiated rate
- You will stay in one of the same hotels as other conference participants
- ILGA-Europe works with the pre-booked hotels in order to increase their sensitivity to LGBTI guests

ILGA-Europe could only pre-book a limited number of rooms to reduce financial risk. **Each hotel has a maximum number of rooms available** (as indicated below). Rooms will be given away on a first **come first served basis**.

Crowne Plaza Brussels

- This is the conference hotel
- Rating: 4 star hotel – 8,4/10 on Booking.com
- Availability: 70 single rooms / 60 shared rooms (= 120 people)
- Website: <https://www.ihg.com/crowneplaza/hotels/gb/en/brussels/brube/hoteldetail>



Thon Hotel Brussels City Centre

- Distance from the conference venue: 200 meters (3 minutes)
- Rating: 4 star hotel – 8,4/10 on Booking.com
- Availability: 60 single rooms / 30 shared rooms (= 60 people)
- Website: <https://www.thonhotels.com/our-hotels/belgium/brussels/thon-hotel-brussels-city-centre/>



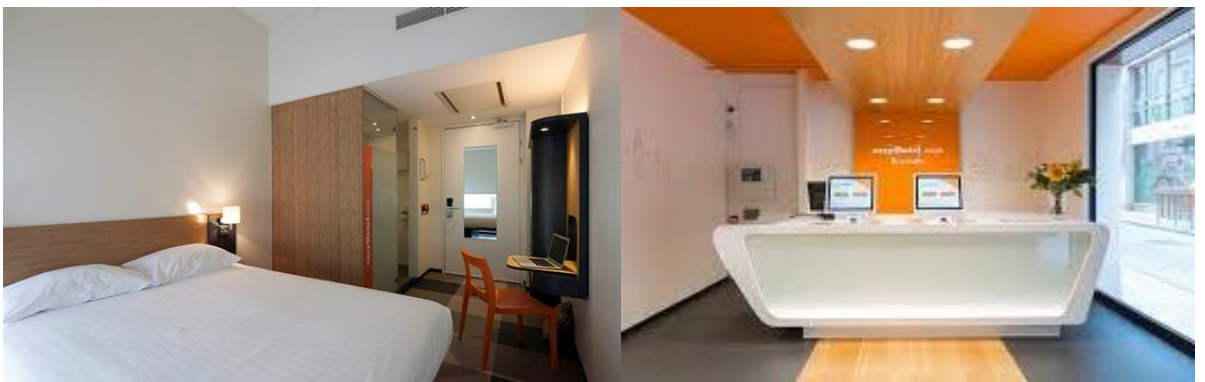
Marivaux Hotel

- Distance from the conference venue: 350 meters (5 minutes)
- Rating: 4 star hotel – 8,2/10 on Booking.com
- Availability: 15 single rooms / 15 shared rooms (= 30 people)
- Website: <http://www.hotelmarivaux.be/>



Easy Hotel (budget option)

- Distance from the conference venue: 750 meters (10 minutes)
- Rating: 3 star hotel – 8,3/10 on Booking.com
- Availability: 10 single rooms / 10 shared rooms (= 20 people)
- Website: <https://www.easyhotel.com/en/hotels/belgium/brussels/101939>



If you decide to stay in one of the hotels pre-booked by ILGA-Europe, **accommodation costs** for 4 nights (Wednesday 24 to Sunday 27 October) are **included in the participation fee**:

Type of accommodation	Participation fee	
	Single room	Shared room
Crowne Plaza / Thon Hotel*	€850,00	€610,00
Marivaux Hotel	€815,00	€585,00
Easy Hotel	€700,00	€510,00

*Crowne Plaza and Thon Hotel are offered as one single option because they are of similar quality and offer the same facilities. If you choose to book a room at the Crowne Plaza or Thon Hotel, please note that ILGA-Europe will assign you to one of these hotels based on availability and in a way that facilitates the logistical planning of our growing conference in the best possible way. You will be notified about the allocation at a later stage.

2. ARRANGE YOUR OWN ACCOMMODATION

It is not compulsory to stay in one of the hotels pre-booked by ILGA-Europe. Feel free to explore your own options.

Budget options within walking distance of the conference venue:

- Max Hotel: <http://www.maxhotel.be/>
- Best Western City Centre: <https://www.bestwestern.fr/fr/hotel-Bruxelles-Best-Western-City-Centre-92933>
- Hotel des Colonies : <http://www.hotel-des-colonies.com/>
- Hotel Siru: <http://hotelsiru.com/>

ILGA-Europe does not guarantee the room availability, the quality/standing of these hotels or the sensitivity of hotel staff to LGBTI guests.

If you decide to stay in one of the hotels pre-booked by ILGA-Europe, **accommodation costs are not included in the participation fee**:

Type of accommodation	Participation fee
No accommodation	€340,00

ACCOMMODATION FOR GUESTS AND SCHOLARS

If you are attending the Annual conference as an invited guest, speaker or approved scholar, your accommodation will be arranged by ILGA-Europe. You will be informed in due time about which hotel you have been assigned to.